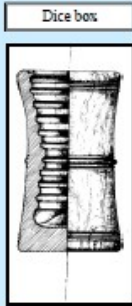
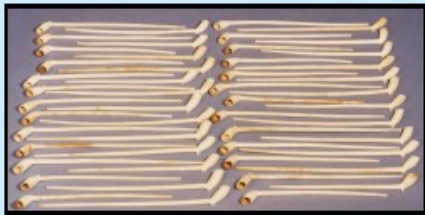


18th CENTURY FUN AND GAMES AT EPSOM SPA

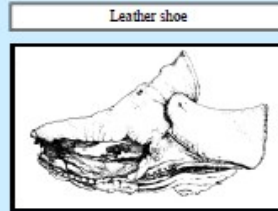


Clay pipes from two Guildford makers found in Pit A

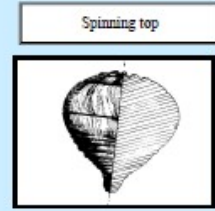
A selection of clay pipes



Dice box



Leather shoe



Spinning top



Leather, wood and textiles from the waterlogged fill of Pit A on the South Street site



Bowling pin



A Schweinetopf or "pigpot", possibly from Germany-- from 106/110 High Street.



Finds from early 18th century stone lined pit on the South Street site



A North Holland slipware cockerel bowl dated 1712 from 6 South Street



A pewter tankard (or wine measure) with stamped initials WWR and touch mark of the second half of 17th century, found at 41 South Street

From Pit A - wine bottles, including flat French bottle and raffia-covered neck, early 18th century

